



2007 Nissan Pathfinder



Reclaim adventure. Pack three rows with curiosity and head out. A powerful 266-hp V6 aiming for the tallest peak. Count on Hill Start Assist to get you up. And All-Mode 4WD[®] to get you around. Configure seven seats up to 64 different ways. Tow 6,000 lbs.¹ of toys. And watch all the fun on a 7" DVD monitor. Plug in your iPod.[®] Rock to Bose.[®] Or tap into GPS. And go places you'll never forget. **Nissan Pathfinder. 266 horsepower. 3 rows. Better stories.**

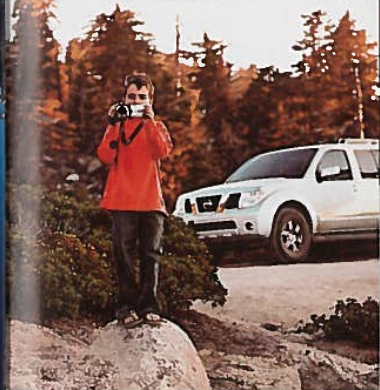
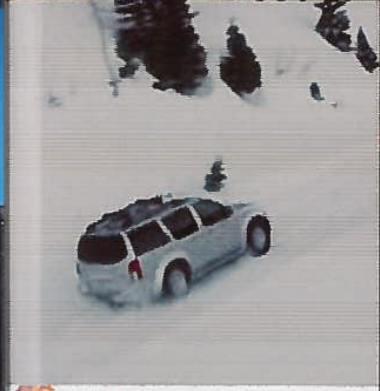
SHIFT_journeys



¹Maximum towing capacity. 7-pin connector trailer wire harness required. See your owner's manual or Nissan Towing Guide for proper use. [®]iPod is a registered trademark of Apple Computer, Inc. [®]Bose is a registered trademark of The Bose Corporation.



- 6 All-Mode 4WD
- 8 Off-road
- 10 Engine and Towing
- 12 Handling
- 18 Interior
- 30 Navigation System
- 34 Protection
- 38 Models/Specifications
- 42 Paint+Fabric
- 44 Accessories











Pathfinder SE Off Road shown in Silver Lightning.

All-Mode 4WD



Ever-changing road conditions demand a reaction. How do you respond? Choose between the sure-footed **All-Mode 4WD** or the off-road-minded performance of **shift-on-the-fly 4WD**. Two very capable systems. One very easy choice. Go.

All-Mode 4WD¹ constantly monitors traction and reacts accordingly. The result? Maximum grip on practically any surface. Switch into "Auto" mode and this advanced system automatically senses any loss of traction and shifts between 4WD and 2WD as needed. Wet, icy or rough surfaces signal 4WD to kick in and send power to the wheel(s) with the most grip. As soon as traction is detected, the system switches back to 2WD for improved fuel efficiency.² And all you have to do is drive. (Available on LE only.)

Shift-on-the-fly 4WD allows you to shift between 2WD and 4WD at the switch of a dial at speeds up to 60 mph. 4WD also includes 4-LO, for severe conditions that demand lots of control at a very low speed. In these circumstances, throttle sensitivity is also reduced for smaller doses of power.

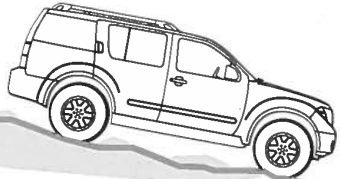
¹Optional. ²See Specifications for EPA Fuel Economy Estimates.

**The force is too strong to resist. So why not go with it?
Pathfinder's advanced technologies let you climb all
day long without getting tired.**



When starting from a stop on a steep hill, **Hill Start Assist** (1) helps make sure you won't roll backwards. By automatically holding brake pressure for a few seconds, the system gives you the time you need to switch your foot from brake to accelerator. (SE Off Road only.)

Now imagine driving down the same steep hill in low gear. If you wanted to slow down, braking used to be your only choice. Enter **Hill Descent Control** (2). Simply flip the switch, ease your foot from the accelerator, and the system automatically adjusts engine speed and brake pressure to help keep you moving at a controlled speed. (SE Off Road only.)





4.0
Liter V6 engine

You've got a big boat behind you. And massive power up front. Which means nothing will stand between you and the lake. No matter how big the mountains. That's just the kind of performance you'd expect from Nissan's legendary VQ engine.

266
Horsepower

288
lb-ft of torque

6,000
maximum lbs. towing¹

Adventure meets technology. Pathfinder's 24-valve VQ engine features a Continuously Variable Valve Timing Control System that helps deliver enormous low-end torque. Friction-reducing microfinishing for extra smoothness. And a 5-speed automatic transmission that's geared to squeeze out every last ounce of muscle. Whether you're facing long stretches of highway or dramatically steep hills.



Gravity

4-wheel Limited Slip (ABLS)³ Sometimes the roads we choose are rough. Uneven. And downright challenging. That's where available 4-wheel Limited Slip comes in. This advanced system senses when a drive wheel(s) is spinning and automatically applies the brakes to the slipping wheel(s), directing power to the drive wheel(s) with the best traction. So you can help keep the momentum going, wherever you're headed.

³Active Brake Limited Slip, 4-wheel Limited Slip (ABLS) on 4x4 models. 2-wheel Limited Slip (ABLS) on 4x2 models.

Handling

Pathfinder's independent rear suspension does more than absorb the ups and downs of daily life. It actually has road-smoothing advantages that make for better ride and handling. Especially if you're sitting in the second- and third-row seats. And with comfort comes strength. Like Pathfinder's **super high-tensile steel**, 90% stronger and 22% lighter than conventional steel, this rugged material benefits Pathfinder in strategic areas throughout its frame. The result? Greater durability. A superior ride. And solid handling. Just what you need to stand out in today's urban terrain.

rough roads



A photograph of a city street at sunrise. The sun is low on the horizon, creating a bright glow and lens flare. The street is lined with multi-story brick buildings. Several cars are parked along the sides of the road. In the foreground, there are several large potholes and a circular manhole cover. The overall atmosphere is warm and urban.

smooth ride

**Living in a city is full of bumps.
It's how you handle them that sets you apart.**

Vehicle Dynamic Control (VDC)¹ is an automatic system designed to help you stay on your steered path. If your vehicle begins to oversteer (fishtail) or understeer (plow forward), VDC senses the change and reduces engine output and/or applies appropriate brake pressure to the specific wheels.

4-wheel Limited Slip (ABLS)² redirects power to the drive wheel(s) with better traction. When a loss of traction is detected in one or more drive wheels, braking force is applied to that wheel to help slow it down.



Pathfinder's advanced traction and braking technologies respond

Anti-lock Braking System (ABS) rapidly pumps the brakes during sudden braking to help keep your wheels from locking up, helping you to maintain steering control.

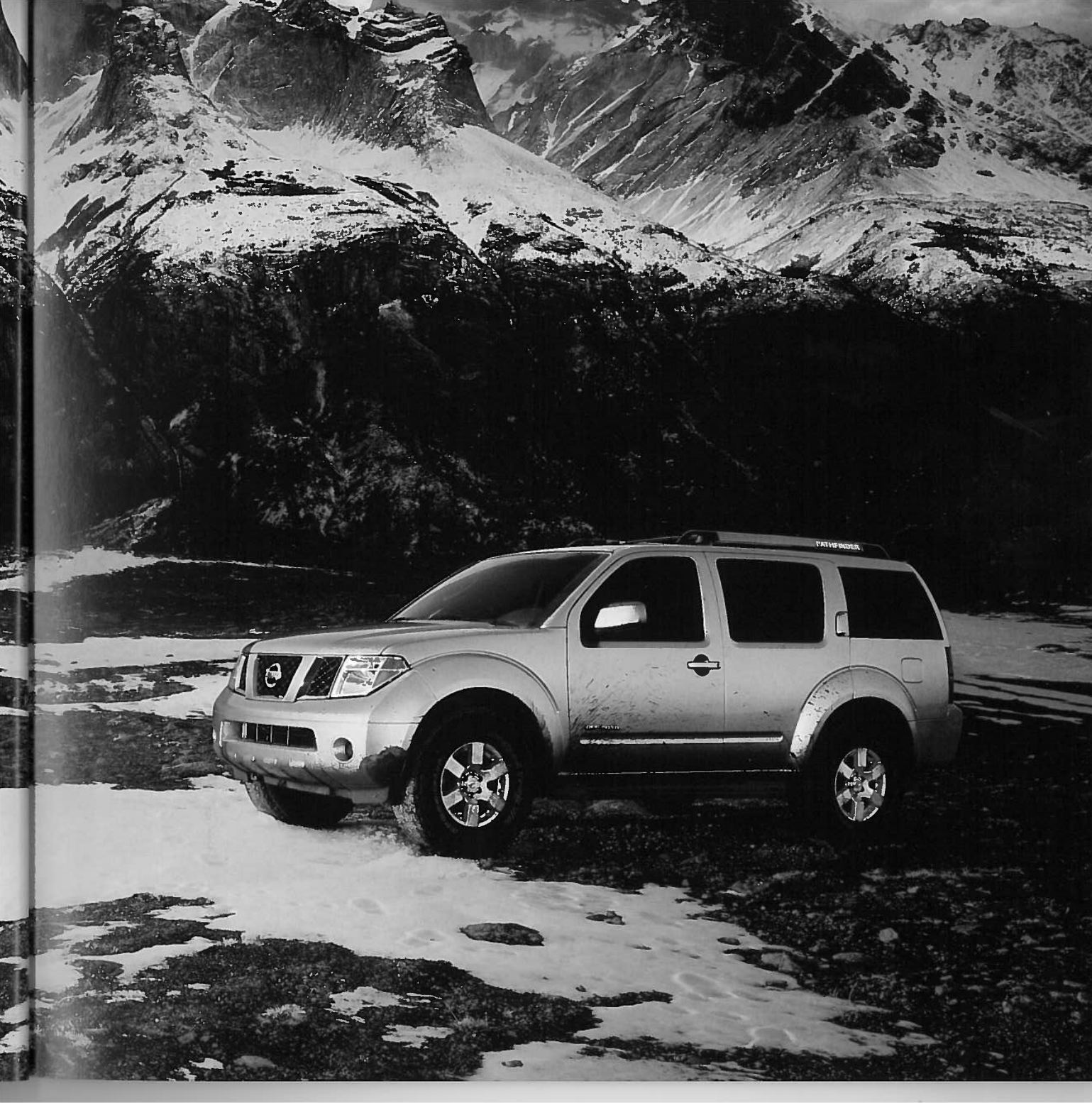
Electronic Brake force Distribution helps compensate for additional weight, whether it's a full house or a full tank of gas, by sending extra force to the rear brakes.



to every twist and turn, reacting instantly to help keep you in control.

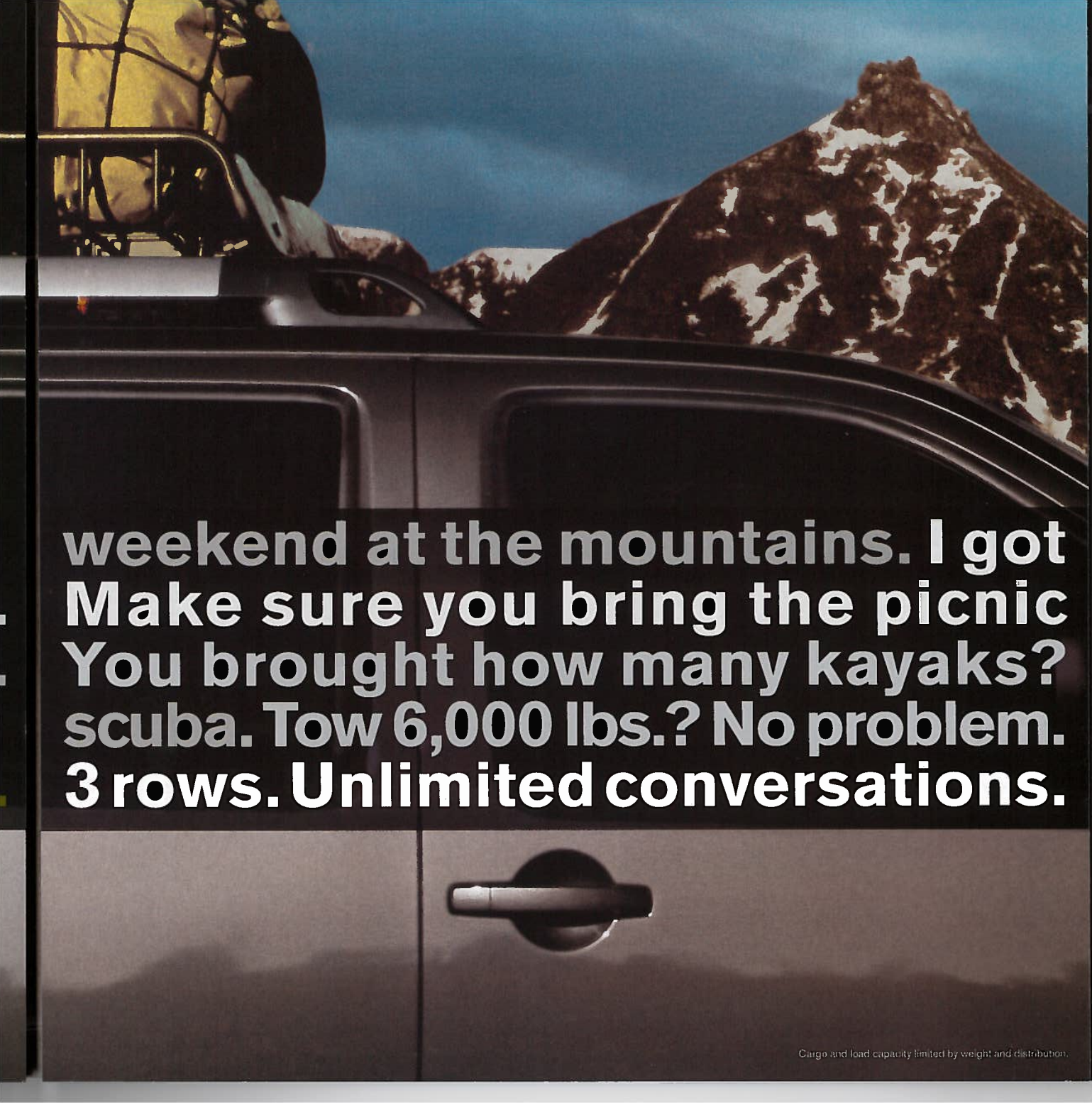
*VBC cannot prevent accidents due to abrupt steering, careless use, or dangerous driving techniques. Always drive safely. ²4x4 models. ¹wheel Limited Slip on 4x2 models.





PATHFINDER

We would love to spend a long
us a campsite right on the beach.
table. Save that story for tonight.
Now the whole family is certified for
Of course we have an extra seat.



**weekend at the mountains. I got
Make sure you bring the picnic
You brought how many kayaks?
scuba. Tow 6,000 lbs.? No problem.
3 rows. Unlimited conversations.**



Fold down the 60/40 second row and 50/50 third row and you have the perfect refuge for five escapees, ski gear, and a 3-day getaway, high into the mountains.



Load up for a weekend in the country. Two rows accommodate a family of five, while a folding flat third row means you can easily carry all the luggage.



Get ready for a day of home improvements. Take along a helper or fold down the front passenger seat and carry an 8-foot ladder. Fold down the second and third rows and you'll have plenty of room for supplies. Next up: your dream house.



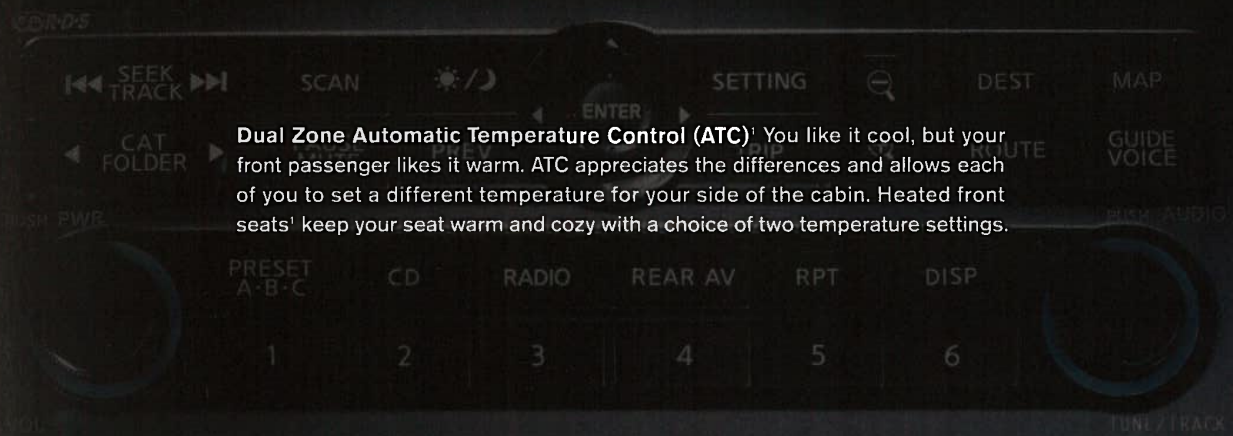




Pathfinder LE shown in Graphite Leather with optional equipment.



Pathfinder LE shown in Graphite Leather with optional equipment.



Dual Zone Automatic Temperature Control (ATC)¹ You like it cool, but your front passenger likes it warm. ATC appreciates the differences and allows each of you to set a different temperature for your side of the cabin. Heated front seats¹ keep your seat warm and cozy with a choice of two temperature settings.



Rear Air Conditioning¹ Now everyone stays cool. And calm. Controls are available on the dash and in the rear.

LOAD

MP3
SCD CHANGER

BOSE

150



Pathfinder LE shown in Desert Leather with optional equipment.



Instant recall. Pathfinder's available Driver's Memory System¹ not only remembers where you – and your partner – like the driver's seat. It also brings the power pedals and power outside mirrors into your preferred position. Simply press a button on the door or access your keyless remote and watch everything move into place. Instantly.

¹See Specifications for availability.



After a week of fishing, there's bound to be wet and dirty gear. (Loads of it.) Luckily, you have Pathfinder's available Easy Clean cargo area. It's durable and water-resistant, extending all the way to the second row, when the third row is folded down. Now if only cleaning fish could be this easy.

Cargo shown for display purposes only. Nissan recommends that all loose items be secured when transported. Cargo and load capacity limited by weight and distribution.



Side Net

Side Seat Pocket

Organize your adventure around Pathfinder. The fishing trip is a go. Now comes the fun part: Packing. Fortunately, Pathfinder has ideas for storing everything. From wide-open spaces to tucked-away bins, Pathfinder is designed with plenty of places for your gear and incidentals. Remembering the insect repellent is up to you.



Dual-level Glove Compartment

Center Console Storage

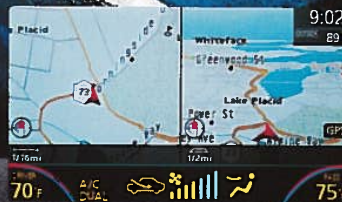
Removable Cup Holders

Under-floor Storage

Altitude reads 1,800 feet. Time to recheck your coordinates: 44.17° North, 73.57° West. Perfect. Lake Placid should be right here.

Now that we know where we are, it's time to get lost for a few days.





Coordinate your desire for escape with the bold, new graphics of the available DVD-based Nissan Navigation System! Simply enter the address, intersection, or phone number and the system's network of satellites automatically guides you. You can check your location on the 7" color monitor. Or track your progress via a conventional map or through the patented 3-dimensional Birdview.[™] And once you've arrived, you can get around like a local with the system directing you to the nearest ATM, seafood restaurant or gondola ride.

LISTEN.

BOSE

Amaze your ears with the available **Bose® Audio System**. Custom-tuned to accommodate details like the contour of the seats and volume of leg room, this premier system delivers near studio-quality sound with ten strategically placed speakers, including **dual subwoofers**. Features like an in-dash 6-CD changer, satellite radio pre-wiring¹ and the ability to play **MP3/WMA-encoded CDs** (giving you up to 4.2 GB of music, or over 1,000 songs) round out the experience.

This year, Pathfinder adds something new for your listening pleasure: an auxiliary audio input. So **plug in your iPod®** or other MP3 player and rock to your own playlist. The fish won't suspect a thing.



WATCH. Sometimes the action is right in front of you.

Nothing captures the moment over and over again like the **available Nissan DVD Entertainment System with 7" flip-down color monitor**. Hook up your camcorder to the DVD player's auxiliary inputs and in minutes, Pathfinder transforms into a screening room. Insert a DVD and you're watching a movie at a drive-in. Connect your gaming system and you have a video arcade. But say you want to relax with a different source of entertainment than your rear passengers? Dual Media Playback lets you rock to your favorite band up front while the kids in back quietly watch a replay of the day's catch, compliments of two wireless headsets and a wireless remote.

No satellite radio reception is available unless optional satellite receiver and antenna were purchased and installed and an XM® or Sirius™ satellite radio service subscription is active. Satellite radio option can only be installed in vehicles that were factory pre-wired for satellite radio. Satellite radio not available in Hawaii and Alaska. *iPod is a registered trademark of Apple Computer, Inc.

Expand your peace of mind. Find security at any elevation. Protect your cargo, especially the precious kind. The Nissan Safety Shield is our comprehensive approach to safety. It includes rigorous crash testing, over 50 standard safety features on every vehicle, available advanced technologies, and child-safety programs like Snug Kids. In Pathfinder, an Advanced Air Bag System, available roof-mounted curtain air bags for all three rows, and front-seat active head restraints are just a few of the examples of our safety philosophy in action.

Of course, Pathfinder has received the government's highest award – a 5-star safety rating – for side-impact (front and rear) crash-test safety.¹



Air Bag Technology.² Pathfinder's Advanced Air Bag System (AABS) includes standard dual-stage supplemental front air bags that incorporate seat belt sensors and an occupant-classification sensor. These dual air bags adjust their inflation rate depending on the severity of impact and seat belt use. If the front passenger seat is empty or occupied by a young child, a sensor actually deactivates that air bag.²

In addition, available side-impact supplemental air bags are built into the front seats, so they move with you. Pathfinder also offers available roof-mounted curtain supplemental air bags for side impact and roll-over protection. When the sensor detects an impending rollover, the system deploys the roof-mounted curtain supplemental air bags. These air bags remain inflated long enough to help provide enhanced protection for the front, second and third rows in the event of a rollover.²

Structure. Pathfinder's Zone Body construction disperses crash energy to help protect the occupant compartment if the unavoidable happens. It includes front and rear crumple zones, energy-absorbing frame side-members and crossmembers, reinforced body structure and bumper height, and frame structure designed for compatibility with other vehicles. All of these features help to lessen the effects of an impact and help protect your family.

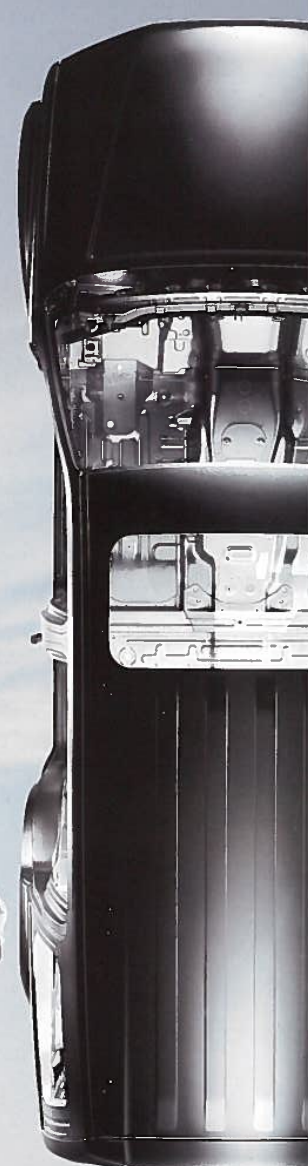
Another Nissan First. NHTSA-certified 'Child Passenger Safety' technicians have dedicated over 1,000 man-hours to checking over 4,000 child seat installations in Nissans. The result: An industry first, The Snug Kids Child Safety Seat Fit Guide. This guide lists child seats that fit the rear seats of Nissan vehicles, as well as offers invaluable tips on correct installation. Look for the latest Fit Guide at NissanUSA.com/SnugKids



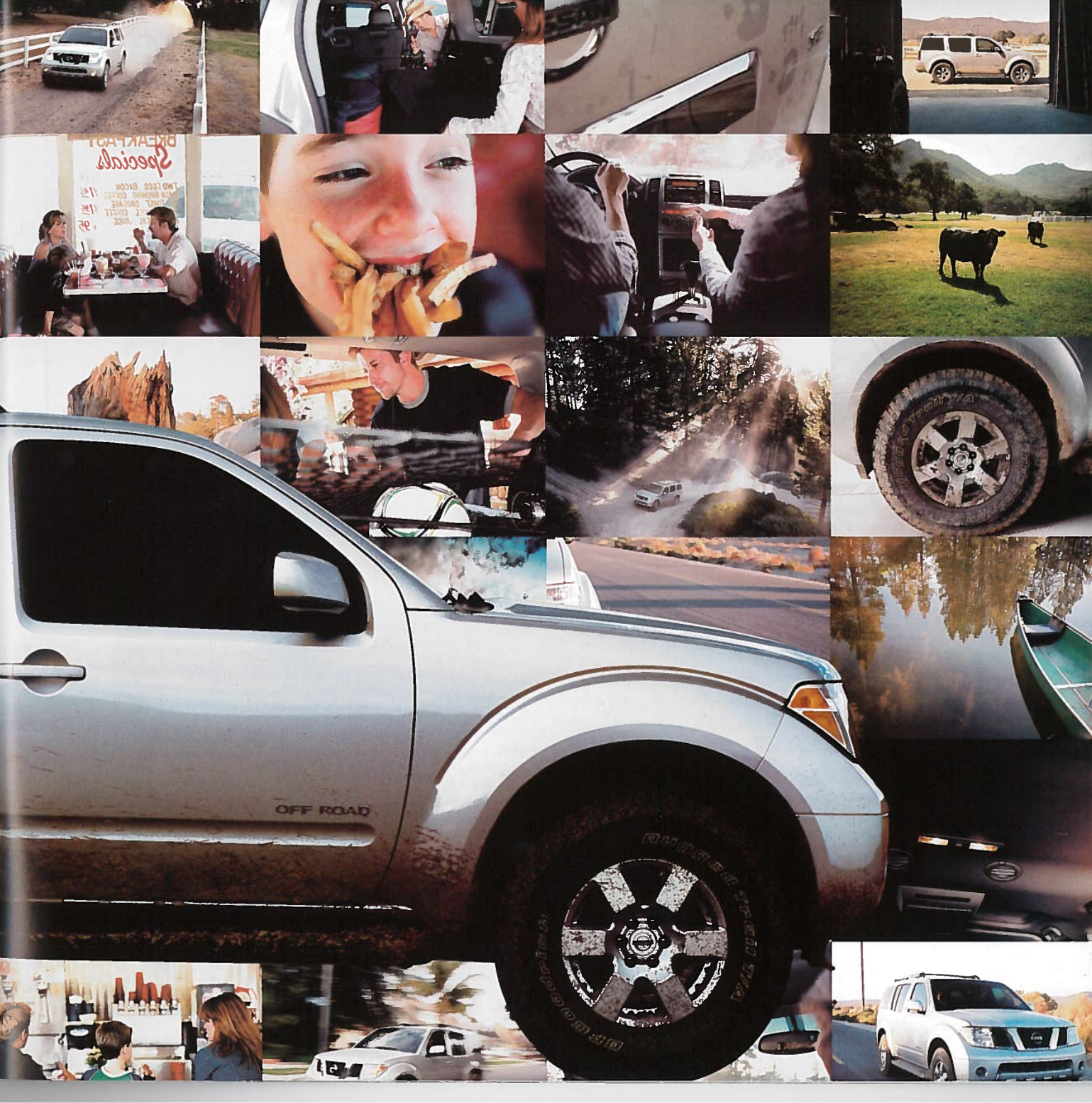
4,000 child seat installations in Nissans. The result: An industry first, The Snug Kids Child Safety Seat Fit Guide. This guide lists child seats that fit the rear seats

of Nissan vehicles, as well as offers invaluable tips on correct installation. Look for the latest Fit Guide at NissanUSA.com/SnugKids

¹Government star ratings are part of the National Highway Traffic Safety Administration's (NHTSA's) New Car Assessment Program (NCAP). A 5-star rating is the highest government safety rating for front and rear seating positions in side-impact crash tests. ²Air bags are only a supplemental restraint system; always wear your seat belt. Even with the occupant-classification sensor, rear-facing child restraints should not be placed in the front-passenger's seat. Also, all children 12 and under should ride in the rear seat properly secured in child restraints, booster seats, or seat belts according to their size. Air bags will only inflate in certain accidents; see your owner's manual for more details. Inflated air bags shown for illustration purposes only. Actual air bags deflate after deployment.







Specifications

Engine	S 4x2, 4x4	SE 4x2, 4x4	SE Off Road 4x4	LE 4x2, 4x4
VQ40DE – 4.0-liter DOHC 24-valve V6 engine ¹				
– Horsepower – 266 hp @ 5,600 rpm				
– Torque – 288 lb-ft @ 4,000 rpm				
Emissions – ULEV				
Continuously Variable Valve Timing Control System (CVTCS)				
Variable Intake System				
Nissan Direct Ignition System with platinum-tipped spark plugs				
Electronic drive-by-wire throttle				
Skid plate – lower radiator				
Skid plates – oil pan, fuel tank, and transfer case				

Drivetrain	S 4x2, 4x4	SE 4x2, 4x4	SE Off Road 4x4	LE 4x2, 4x4
5-speed automatic transmission				
Shift-on-the-fly 4x4 switch-operated 2-speed transfer case				
All-Mode 4WD with 2-speed transfer case				
Vehicle Dynamic Control (VDC)				
2-wheel Limited Slip (ABLS) – 4x2				
4-wheel Limited Slip (ABLS) – 4x4				
Hill Descent Control (HDC)				
Hill Start Assist (HSA)				

Wheels/Tires	S 4x2, 4x4	SE 4x2, 4x4	SE Off Road 4x4	LE 4x2, 4x4
16" x 7.0" 5-spoke aluminum-alloy wheels				
16" x 7.0" 6-spoke aluminum-alloy wheels				
17" x 7.5" 6-spoke aluminum-alloy wheels				
P245/75R16 Tires				
P265/70R16 BFGoodrich® Radial Long Trail T/A® tires				
P265/75R16 BFGoodrich® Rugged Trail T/A® tires				
P265/65R17 BFGoodrich® Radial Long Trail T/A® tires				
Full-size spare tire				
Tire Pressure Monitoring System (TPMS)				

Brakes	S 4x2, 4x4	SE 4x2, 4x4	SE Off Road 4x4	LE 4x2, 4x4
4-wheel vented disc brakes				
Anti-lock Braking System (ABS)				
Electronic Brake force Distribution (EBD)				

Suspension/Steering	S 4x2, 4x4	SE 4x2, 4x4	SE Off Road 4x4	LE 4x2, 4x4
Front: Independent double-wishbone				
Rear: Independent double-wishbone				
Rancho® off-road performance shocks				
Front and rear stabilizer bars				
Engine speed-sensitive power-assisted rack-and-pinion steering				

Exterior	SE 4x2, 4x4	SE Off Road 4x4	LE 4x2, 4x4
Automatic on/off headlights	P	P	
Fog lights			
Roof rails			
Roof rail crossbars and running boards			
Front tow hook			
Tow receiver hitch			
Dual power body-color outside mirrors (black on S)			
Dual power body-color heated outside mirrors	L	L	
Power sliding glass sunroof with one-touch open/close	P	P	
Front UV-reducing solar glass			
Rear privacy glass and flip-up liftgate window			

Entertainment	SE 4x2, 4x4	SE Off Road 4x4	LE 4x2, 4x4
Nissan DVD Entertainment System with 7.0" monitor, DVD player with auxiliary inputs, remote control, and two wireless headsets	DV	DV	DV
AM/FM/CD audio system with six speakers			
AM/FM/in-dash 6-CD changer audio system with six speakers	C		
Digital Bose® audio system with AM/FM/in-dash 6-CD changer	P	P	
Dual Media Playback, Radio Data System (RDS), and speed-sensitive volume	P	P	
MP3/WMA CD playback capability and steering wheel-mounted audio controls	C P		
Ten speakers, including subwoofers	P	P	
Auxiliary audio input	C		
Satellite radio pre-wiring ²	C P		
Satellite radio receiver (XM® or Sirius™) – includes activation and 3 months of service			

Interior	SE 4x2, 4x4	SE Off Road 4x4	LE 4x2, 4x4
Nissan Navigation System with GPS, DVD atlas, 7" color LCD monitor, and Information Center with tire pressure monitor display			N
Trip computer			
Front air conditioning			
Dual Zone Automatic Temperature Control (ATC)	C		
Rear air conditioning controls	C		
Power door locks			
Power windows with driver and front passenger one-touch auto up/down			
Remote keyless entry			
HomeLink® Universal Transceiver	P	P	
Cruise control with steering wheel-mounted controls			
Variable intermittent windshield wipers			
Auto-dimming rearview mirror, digital compass and outside temperature display	C		
Front map lights			
Three 12-volt DC power outlets			
Voltage and oil pressure gauges			

Standard
 Optional
 Part of Premium Package

L Part of Leather Package
 DV Part of Nissan DVD Entertainment System
 C Part of SE Comfort Package

N Part of LE Nissan Navigation Package
 AB Part of Side Air Bags Package



- S**
- 4-wheel independent suspension
 - 16" Aluminum-alloy wheels
 - Vehicle Dynamic Control (VDC)
 - 2-wheel or 4-wheel Limited Slip (ABLS)
 - Roof rails
 - 7-passenger capacity
 - Fold-flat second- and third-row seats



SE

Includes S features, plus:

- P265/70R16 BFGoodrich® Radial Long Trail T/A® tires
- Roof rail crossbars
- Running boards
- Fog lights
- Body-color outside mirrors
- Front tow hook
- 8-way power driver's seats
- Easy Clean cargo area



SE Off Road

Includes SE features,¹ plus:

- Shift-on-the-fly 4x4 transfer case
- Rancho® off-road performance shocks
- Hill Descent Control (HDC) and Hill Start Assist (HSA)
- Skid plates
- P265/75R16 BFGoodrich® Rugged Trail T/A® tires
- 16" Aluminum-alloy wheels
- Rear air conditioning controls
- Power adjustable pedals
- Auxiliary audio input



LE

Includes SE features,¹ plus:

- 265/65R17 BFGoodrich® Radial Long Trail T/A® tires
- 17" Aluminum-alloy wheels
- Power glass sunroof
- Bose® audio system
- Driver's Memory System
- Leather-appointed seats (front and second-row seats)
- Heated front seats and outside mirrors
- 4-way power front-passenger seat

¹Easy Clean cargo area, fold-down front-passenger seat, and front tow hook not available.

Interior (continued)	S 4x2, 4x4	SE 4x2, 4x4	SE Off Road 4x4	LE 4x2, 4x4
Sun visor extenders and dual illuminated visor vanity mirrors		☑		
Power adjustable pedals		☑		
Tilt steering column	☑			
First-aid kit			☑	☑

Seating/Appointments

8-way power (manual on S) adjustable driver's seat with manual lumbar				
4-way power adjustable front-passenger's seat		☑	☑	
Driver's memory system – driver's seat, mirrors and pedals (remote-activated), driver's entry/exit system				☑
Fold-down front-passenger's seat (deleted when equipped with leather interior)			☑	
Second-row 40/20/40 split fold-flat bench seat with tip-up easy entry for third row	☑	☑	☑	☑
Third-row 50/50 split fold-flat bench seat				☑
Cloth seat trim	☑	☑	☑	☑
Leather-appointed seats (front and second row)		☑	☑	
Heated front seats		☑	☑	
Leather-wrapped steering wheel and shift lever		☑		
Wood-tone trim			☑	
Eight cup holders, front seatback pockets and front and rear door storage pockets			☑	
Cargo tie-down hooks (twelve), cargo net and under-floor storage	☑	☑	☑	☑
Easy Clean cargo area		☑	☑	

Safety/Security

Nissan Advanced Air Bag System (AABS) with dual-stage supplemental front air bags with seat belt sensors and occupant-classification sensor				
Driver and front-passenger seat-mounted side-impact supplemental air bags	☑	☑	☑	
Roof-mounted curtain supplemental air bags for side-impact and rollover protection for all three rows of outboard occupants	☑	☑	☑	
3-point ALR/ELR passenger seat belt system (ELR for driver)				☑
Front-seat active head restraints			☑	
Front seat belts with pretensioners and load limiters			☑	
LATCH System (Lower Anchors and Tethers for CHildren)			☑	
Zone Body construction with front and rear crumple zones			☑	
Hood buckling creases and energy-absorbing steering column			☑	
Pipe-style steel side-door guard beams			☑	
Vehicle security system and Nissan Vehicle Immobilizer System			☑	

SE Comfort Package

- Dual Zone Automatic Temperature Control (ATC)
- Rear air conditioning controls
- AM/FM/in-dash 6-CD changer audio system
- Steering wheel-mounted audio controls
- MP3/WMA CD playback capability
- Auxiliary audio input
- Satellite radio pre-wiring²
- Auto-dimming rearview mirror
- Digital compass and outside temperature display
- Sun visor extenders and dual illuminated visor vanity mirrors
- Power adjustable pedals
- Leather-wrapped steering wheel and shift knob
- Aluminum-look accents

Premium Package (SE, SE Off Road)

- Automatic on/off headlights
 - Power sliding glass sunroof with one-touch open/close
 - Digital Bose® audio system with AM/FM/in-dash 6-CD changer
 - Speed-sensitive volume
 - Ten speakers, including subwoofers
 - MP3/WMA CD playback capability
 - Satellite radio pre-wiring²
 - HomeLink® Universal Transceiver
- This package requires SE Comfort Package on SE models.

Leather Package (SE, SE Off Road)

- Leather-appointed seats (front and second row)
 - Heated front seats
 - Heated outside mirrors
 - 4-way power front-passenger's seat
- Fold-flat front-passenger's seat is deleted with this package.
- This package requires SE Comfort Package on SE models.

DVD Entertainment System (SE, SE Off Road, LE)

- Nissan DVD Entertainment System with 7.0" monitor
 - DVD player with auxiliary inputs
 - Remote control and two wireless headsets
- This package requires Premium Package on SE and SE Off Road models.

LE Nissan Navigation Package

- Nissan Navigation System with GPS, DVD atlas, 7.0" color LCD monitor
- Information Center with tire pressure monitor display

Side Air Bags Package (S, SE, SE Off Road)

- Driver and front-passenger seat-mounted side-impact supplemental air bags
 - Roof-mounted curtain supplemental air bags for side-impact and rollover protection for all three rows of outboard occupants
- These items are standard on LE.

¹Use regular unleaded fuel with 87 octane. For maximum power, use premium fuel. ²No satellite radio reception is available unless optional satellite receiver and antenna were purchased and installed and an XM® or Sirius™ satellite radio service subscription is active. Satellite radio option can only be installed in vehicles that were factory pre-wired for satellite radio. Satellite radio not available in Hawaii and Alaska. ³SE requires SE Comfort Package. ⁴Rancho is a registered trademark of Tenneco Automotive Operating Company, Inc. ⁵BFGoodrich is a registered trademark of Goodrich Corporation. ⁶Long Trail and Rugged Trail T/A are registered trademarks of Uniroyal Goodrich Licensing Services, Inc. ⁷HomeLink is a registered trademark of Johnson Controls Technology Company.

Dimensions/Capacities

Interior Dimensions – Inches

Front/second row/third row

Head room without sunroof	40.0/39.0/36.7
Leg room	42.4/34.2/28.1
Hip room	55.5/57.6/44.0
Shoulder room	58.3/58.4/57.1

Capacities

Interior passenger volume (cu. ft.)	149.1
Cargo capacity (cu. ft.)	
All seats in user positions	16.5
Second row upright, third row folded flat	49.2
Second row folded, third row folded flat	79.2
Fuel tank (gals.)	21.1
Maximum towing capacity	6,000 lbs.
(7-pin connector trailer wire harness required)	

Off-road Abilities

Ground clearance	8.6" – 9.2"
Angle of approach	30.7° – 32.6°
Angle of departure	22.4° – 24.4°
Ramp over angle	20.9° – 22.3°

Curb Weights – Lbs.

	S	SE	SE Off Road	LE
4x2	4,373	4,507	–	4,612
4x4	4,629	4,716	4,771	4,859

2007 EPA Fuel Economy Estimates – City/Hwy

	S	SE	SE Off Road	LE
4x2	16/23	16/23	–	16/23
4x4	15/21	15/21	15/21	15/21

Actual mileage may vary with driving conditions – use for comparison only.

Exterior Dimensions



All illustrations, photographs and specifications in this publication are based on the latest product information available at the time of printing. Some vehicles shown with optional equipment. See the actual vehicle for complete accuracy. Availability and delivery times for particular models or equipment may vary. Nissan North America, Inc. reserves the right to make changes at any time, without prior notice, in prices, colors, materials, equipment, specifications, and models and to discontinue models or equipment. Specifications, options and accessories may differ in Hawaii, U.S. territories and other countries. For additional information on availability, options or accessories, see your Nissan dealer.

³Overall height (non-SE Off Road models): 72.4" (4x2), 72.4" (4x4).



Desert Stone C43

	S	SE	SE Off Road	LE
Graphite Cloth	■	■		
Graphite Leather		L	L	■
Desert Cloth	■	■		
Desert Leather		L	L	■



Avalanche QM1

	S	SE	SE Off Road	LE
Graphite Cloth	■	■		
Graphite Leather		L	L	■
Desert Cloth	■	■		
Desert Leather		L	L	■
Blue/Graphite Cloth			■	

Please see the actual colors at your local Nissan dealer.



Silver Lightning K12

	S	SE	SE Off Road	LE
Graphite Cloth	■	■		
Graphite Leather		L	L	■
Desert Cloth	■	■		
Desert Leather		L	L	■
Blue/Graphite Cloth			■	



Silverton Blue B25

	S	SE	SE Off Road	LE
Graphite Cloth	■	■		
Graphite Leather		L	L	■
Desert Cloth	■	■		
Desert Leather		L	L	■
Blue/Graphite Cloth			■	

■ Standard
 L Part of Leather Package

Interior Colors



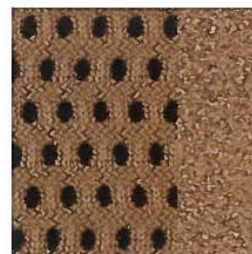
Graphite Cloth S



Desert Cloth S



Graphite Cloth SE



Desert Cloth SE



Storm Gray K27

	S	SE	SE Off Road	LE
Graphite Cloth	<input checked="" type="checkbox"/>	<input checked="" type="checkbox"/>		
Graphite Leather		<input checked="" type="checkbox"/>	<input checked="" type="checkbox"/>	<input checked="" type="checkbox"/>
Desert Cloth	<input checked="" type="checkbox"/>			
Desert Leather		<input checked="" type="checkbox"/>	<input checked="" type="checkbox"/>	<input checked="" type="checkbox"/>
Blue/Graphite Cloth			<input checked="" type="checkbox"/>	



Red Brawn A15

	S	SE	SE Off Road	LE
Graphite Cloth	<input checked="" type="checkbox"/>	<input checked="" type="checkbox"/>		
Graphite Leather		<input checked="" type="checkbox"/>	<input checked="" type="checkbox"/>	<input checked="" type="checkbox"/>
Desert Cloth	<input checked="" type="checkbox"/>			
Desert Leather		<input checked="" type="checkbox"/>	<input checked="" type="checkbox"/>	<input checked="" type="checkbox"/>



Super Black KH3

	S	SE	SE Off Road	LE
Graphite Cloth	<input checked="" type="checkbox"/>	<input checked="" type="checkbox"/>		
Graphite Leather		<input checked="" type="checkbox"/>	<input checked="" type="checkbox"/>	<input checked="" type="checkbox"/>
Desert Cloth	<input checked="" type="checkbox"/>			
Desert Leather		<input checked="" type="checkbox"/>	<input checked="" type="checkbox"/>	<input checked="" type="checkbox"/>



Majestic Blue BW9

	S	SE	SE Off Road	LE
Graphite Cloth	<input checked="" type="checkbox"/>	<input checked="" type="checkbox"/>		
Graphite Leather		<input checked="" type="checkbox"/>	<input checked="" type="checkbox"/>	<input checked="" type="checkbox"/>
Desert Cloth	<input checked="" type="checkbox"/>			
Desert Leather		<input checked="" type="checkbox"/>	<input checked="" type="checkbox"/>	<input checked="" type="checkbox"/>
Blue/Graphite Cloth			<input checked="" type="checkbox"/>	

Take the path that leads up to the mountains. Or down to the coastline. Or straight across town. Wherever it is, you'll find a Pathfinder equipped for the journey. Use this brochure to explore the many choices for Pathfinder, or visit NissanUSA.com for more information on specific configurations.



Blue/Graphite Cloth
SE Off Road



Graphite Leather
SE, SE Off Road, LE



Desert Leather
SE, SE Off Road, LE

Genuine Nissan Accessories

See your Nissan dealer for a Pathfinder accessories brochure, or download one at NissanUSA.com



▲ Running Boards

These give everyone a step up, plus help you with loading the roof rack.

▼ Vehicle Cover

Help protect your new Pathfinder from the elements with a custom-fit Vehicle Cover.

Why choose Genuine Nissan Accessories? First, they're backed by Nissan's 3-year/36,000-mile Parts and Accessories limited warranty,¹ when installed at time of vehicle purchase. And you can finance them when you finance your vehicle, adding just a nominal fee to your monthly payment. Only Genuine Nissan Accessories are custom-designed and custom-fit for your Pathfinder. Plus, they're durability-tested, and meet Nissan standards as well as any applicable Federal Motor Vehicle Safety Standards. Look for a wide selection of accessories at over 1,000 Nissan dealers nationwide.

◀ Hood Protector

Made of resilient acrylic, the Hood Protector redirects airflow over the hood to help deflect dirt, insects, and road debris.

▼ Grille/brush Guard

Head out there with the right equipment. Black powder-coated for durability, this Grille/brush Guard is contoured to closely match the vehicle's body styling.



▶ Splash Guards

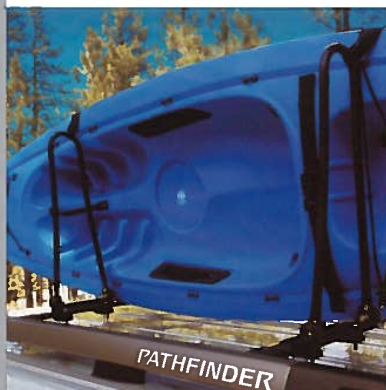
A great way to help protect Pathfinder's lower body panels, these Splash Guards feature easy, no-drill installation.

▶ Body Side Moldings

Add style and help protect against dings, dents, and scratches. Plus they're painted to match your vehicle's color.

▶ Kayak Carrier by Yakima

Made of corrosion-resistant steel tubing and black powder-coated for durability, this Kayak Carrier takes up to two kayaks and includes straps for securing kayaks to the roof rack. (Requires Horizontal MightyMount kit, sold separately.)



▶ Anklebiter® Bike Carrier by Yakima

How easy can it get? Simply attach your bike by the pedal crank – there's no need to remove the front wheel – and head out. Carrier also locks for extra security. (Requires Horizontal MightyMount kit, sold separately.)



▶ LoadWarrior™ and Extension by Yakima

Lightweight but heavy-duty, the LoadWarrior is a great way to carry your gear. Universal mounting hardware is included, but bring your own straps and nets.

▶ Ski/snowboard Carrier by Yakima

Yakima does it again. This carrier lets you bring up to four pairs of skis or two snowboards to keep everyone happy. It also locks for extra security. The optional Ski Carrier Lift Kit helps keep the ski/snowboard bindings from touching the roof. (Requires Vertical MightyMount kit, sold separately.)



▶ Aerodynamic Hard-shell Cargo Carrier

Sleek, compact design has a 12 cu. ft. capacity (that's up to six pairs of skis). A great way to add cargo space without taking up roof-rack crossbar space. Locks for security. (Hardware kit required for installation is sold separately.)

¹See your Nissan dealer and read the actual limited warranty for complete details. Cargo and load capacity limited by weight and distribution. ²Yakima and Anklebiter are registered trademarks of Yakima Products, Inc. ³LoadWarrior is a trademark of Yakima Products, Inc.

Genuine Nissan Accessories



◀ Cargo Organizer

Fits securely in the rear cargo area and features collapsible storage bins.

▶ Cargo Area Protector

Helps keep your cargo area clean and reduces wear and tear. This water-resistant protector is easy to install, remove, and clean.



◀ All-season Floor Mats

These heavy-duty mats have deep channels to help trap dirt, mud, snow, and water.

▶ Cargo Area Carpeted Mat

Durable high-density, nylon carpet helps provide cargo area protection. Non-slip, moisture-resistant backing.

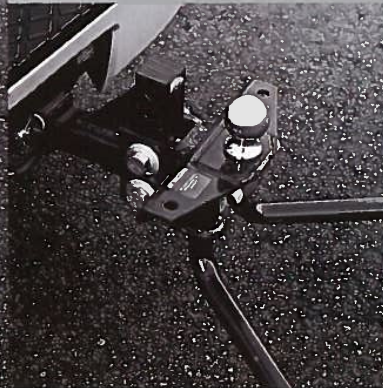


▲ Carpeted Floor Mats

These high-density mats come in complementary colors, and feature a grommet/hook system to help keep the driver's mat in place.

▶ Hitch Ball and Hitch Ball Mount (Class III)¹

Rated for towing up to 5,000 lbs. (sold separately).



◀ Hatch Tent

Welcome to Camp Pathfinder. This 10' x 10' tent features two large entrances, large mesh windows, an adjustable zippered sleeve, plus a 6' x 6' canopy and external rain fly. It also easily converts to a standalone ground tent.

▲ Hitch Ball Mount (Class IV)¹

Weight-distributing Hitch Ball Mount (Class IV) includes Class IV Hitch Ball. To be used when towing over 5,000 lbs. and up to vehicle capacity (depending on vehicle configuration; wiring harnesses and relay required for use with trailer brakes are available separately).

Also Available

Cargo Net
Dockable DVD Entertainment System⁴
Emergency Road Kit
Side Window Deflectors
Sunroof Wind Deflector
Swing-away Hitch-mounted Bike Carrier
Wheel Locks
Water-resistant Seat Covers

Nissan Gear



▲ Satellite Radio^{2,3}

Add XM® or Sirius™ satellite radio and enjoy programming in digital sound from coast to coast. Either fully integrated system fits seamlessly into your existing radio.

◆ Nissan iPod® Interface System¹

Designed exclusively for your Nissan, this system connects via the Pathfinder radio and lets you listen to, control, and even charge your iPod, all while it's neatly hidden in your glove compartment. (iPod not included.)

¹Refer to your owner's manual or Nissan Towing Guide for specific towing information. ²Includes activation and 3 months of service. No satellite radio reception is available unless optional satellite receiver and antenna were purchased and installed and an XM® or Sirius™ satellite radio service subscription is active. Satellite radio option can only be installed in vehicles that were factory pre-wired for satellite radio. Satellite radio not available in Hawaii and Alaska. The XM name and related logos are registered trademarks of XM Satellite Radio Inc. Sirius and related marks are trademarks of Sirius Satellite Radio Inc. All rights reserved. ³Only available on vehicles equipped with in-dash 6-CD changer/autoplay system. ⁴Required installation kit sold separately.

Shirts by Nike.® Bags by High Sierra.® And a whole lot more. Plus a line of merchandise that includes everything from T-shirts to key chains. All of it high-quality, well-designed, and modern in attitude. Like Pathfinder.



Men's Watch

To see the complete line of Nissan apparel and lifestyle gear, log on to:

NissanUSA.com/gear

®Nike is a registered trademark of Nike, Inc. ®High Sierra is a registered trademark of High Sierra Sport Company. ®iPod is a registered trademark of Apple Computer, Inc.



Custom Sunglasses

NISMO

NISMO has been Nissan's source for high performance since 1984. What we've learned from racing has inspired a line of factory-tuned technologies and components for your SUV available right at your Nissan dealer. For a full list of all NISMO components, visit NissanUSA.com/NISMO

nismo

Available Components

Cold Air Intake

Headers

License Plate Frames

Radiator Cap

Oil Filler Cap



What is **SHIFT_**?



Changing for the better. We start with the end-user. Identifying needs. Coming up with one-of-a-kind solutions. Take Titan's revolutionary Utili-track Bed. Inspired by truck owners, it changed the full-size bed forever. Seeking higher standards. Superior engineering has landed our VQ engine on *Ward's* 10 Best Engines list for the past twelve years¹. And every year, we push it more. Thinking beyond the future. Motivated by motorcycle styling and gamer passion, the URGE concept vehicle combines the performance of a rear-wheel drive three-seater sports car with the power of an integrated Xbox 360™ video game system. For more info, go to NissanUSA.com

More ways we shift the experience.

Warranties Every Nissan is backed by a 36-month/36,000-mile vehicle warranty coverage and a 5-year/60,000-mile powertrain coverage. (For complete information, see your Nissan dealer and read the actual limited warranty.)

Signature Financing When you've decided which Nissan is right for you, Nissan Motor Acceptance Corporation (NMAC) offers a variety of financing options, attractive rates, and flexible terms to make your decision easier and helps make your purchase more accessible. See your Nissan dealer or visit NissanUSA.com/Financing for more details. Qualifications and restrictions may apply.

Security+Plus and Maintenance+Plus For ultimate peace of mind, consider the Nissan Security+Plus® Plan, our extended service contract. It's our commitment to be there for you, and to help you leave your worries behind. Different plans, available for both purchase and lease vehicles, let you tailor the coverage to your driving habits. Maintenance+Plus® coverage, on the other hand, ensures your vehicle will receive up to 17 different services and over 33 different inspection items at each visit, using the most up-to-date diagnostic equipment available. (For complete information, see your Nissan dealer and read the actual plan.)

Genuine Nissan Parts and Service Every part we make is manufactured to the same exacting standards as the original. And they're the only parts to carry Nissan's factory-backed limited warranty. At Nissan dealers, you'll find factory-trained, certified service technicians who are just as precision-oriented.



At NissanUSA.com, you'll find virtual product demonstrations, a way to "build your own Nissan," a dealer locator, and more information about key Nissan support services. Or if you'd prefer, call 1-800-NISSAN-3 for answers to specific questions about Pathfinder or any other Nissan vehicle. The Nissan names, logos, product names, feature names, and slogans are trademarks owned by or licensed to Nissan Motor Co. Ltd. and/or its North American subsidiaries. **Tread Lightly!**® Please. Always wear your seat belt, and please don't drink and drive. © 2006 Nissan North America, Inc. 07 Pathfinder. 070013-07/06-300M-GB.



SHIFT_individuality

We see **SHIFT** as an invitation. To challenge whatever feels too familiar. To open your mind to the unfamiliar. To ask the questions no one else is asking. And to find answers no one else can. At Nissan, we do this every day. And it shapes everything we do. The result is a lineup of vehicles that represents a pure, uncompromising shift from the ordinary. **NissanUSA.com**